

# Creation News Update

Proclaiming the TRUTH of the Bible starting at Genesis 1:1

PRICE: Free  
VALUE: Eternal

Vol. 22, #4- Fall 2025 (#90)

But Jesus answered, "I tell you, if these (his followers) become silent, the stones will cry out!" Luke 19:40

We must speak for silence would shame us, and the rocks themselves would cry out... You, O Lord Christ Jesus, must be praised for who You are in the world You have made.

Hello! The latest science is full of new findings that show that God, in the person of Jesus, is Creator of the universe, you and us. Thank you for joining us in learning the Good News.



Guy & Cindy Forsythe

You will find technical references for our articles at:

<http://www.CryingRocks.org>

Published Quarterly in Sedona, AZ by:



PO Box 2526  
Sedona, AZ 86339

[Hello@CryingRocks.org](mailto:Hello@CryingRocks.org)

If you would like to further the cause of our Lord Christ Jesus by supporting Crying Rocks Ministry, we invite you to send a donation of any size. Please send check or money order, not cash. All donations are tax-deductible, will be acknowledged, and a year end statement will be sent after the first of each year. Your prayers are especially appreciated. *Thanks!*

Postal Customer

NON-PROFIT  
U.S. POSTAGE  
PAID  
SEDONA, AZ  
PERMIT NO. 201  
CAR-RT-SORT



## Special Sedona Geology Series

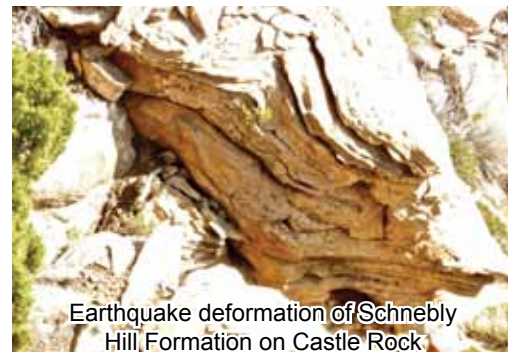


### Part 3 - The Great Sedona Earthquake! (Part 1)

While researching the Coconino, some amazing discoveries were also made in the Schnebly Hill Formation (actually in several formations). Geological features never before mentioned in any papers or books, not even Sedona Through Time, by Wayne Ranney, were discovered by the author. *In the next two parts, we will show you that what you think about Sedona geology in general (not just about the Coconino) is mostly incorrect. We will support that statement with photos and data. No published papers this time - it's all recently discovered. All of the data points to the truth of the Bible story of Noah's Flood. We're still having fun!*



Coconino in Pumphouse Wash shows indication of earthquake



Earthquake deformation of Schnebly Hill Formation on Castle Rock

### Introduction

The past two issues have dealt with the Coconino Formation in Sedona (and elsewhere). Materialist/atheist geologists have determined that the Coconino was deposited over 5 million years. Of course, that means it could not have been deposited during Noah's Flood... Which lasted less than a year. Because those geologists have had to give up their paradigm of geological activity happening slowly over long periods of time for most formations, they hold onto sandstone such as the Coconino to inject millions of years in deposition of strata. Outside of sandstones they have to put their millions of years at the boundary lines between formations (the evidence is lack of data). They want one type of rock to require long times for deposition. We have shown that the Coconino was actually deposited very rapidly. In this issue we will look at more of the layers of strata in Sedona and show that the current explanation is an incorrect interpretation based on assumption and the need to create time. The data, we will show, contradicts these assumptions and show that all the strata in Sedona was deposited in a few days at most.

### Review

There are many lines of evidence in the Coconino Sandstone. In Parts 1 & 2 we looked at several, but not all, of them:

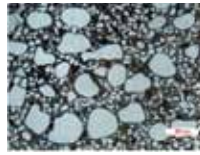
**1 - Crossbed Dip.** Unlike most strata, the strata of the Coconino was laid down at an angle. Naturalists have used this angled deposition as one of the primary arguments for the Coconino being originally deposited as sand dunes by wind. We discovered that there is a lot of myth regarding the angle and it better supports underwater sand waves.

**2 - Sorting.** Naturalists claim the Coconino is well-sorted. Wind sorts sand as it picks it up (picking up small grains first and larger grains as the wind speed increases) and

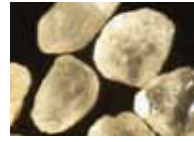
[Next Page](#)

then depositing the different sizes in layers when the wind dies down. The Coconino is poorly sorted. This is strictly a characteristic of water deposition.

**3- Well Rounded.** When viewed through a field glass, which has low magnification, the grains appear to be well rounded. But at greater magnification it is discovered they are sub angular to sub-rounded. The cause is water transport, never any air transport.



**4- Frosting.** The Coconino is indeed frosted. But look at the frosting in the photo to the right. You do not see distinct scratches and angular pits. The frosting is "softer." This is the result of exposure to acid. Which means the frosting occurred in a water environment.



**5- Rain Drops.** The raindrops in the Coconino are quite different. They are in rows. There is distance between individual drops. They make an impression up to 1/2" deep. In other words, they are not raindrops. They are most likely gas bubbles.

**6- Vertebrate Tracks.** Naturalists claim that the tracks were made when creatures walked up a sand dune after a heavy dew the night before (how are the tracks preserved?). Research has shown they were formed under water.

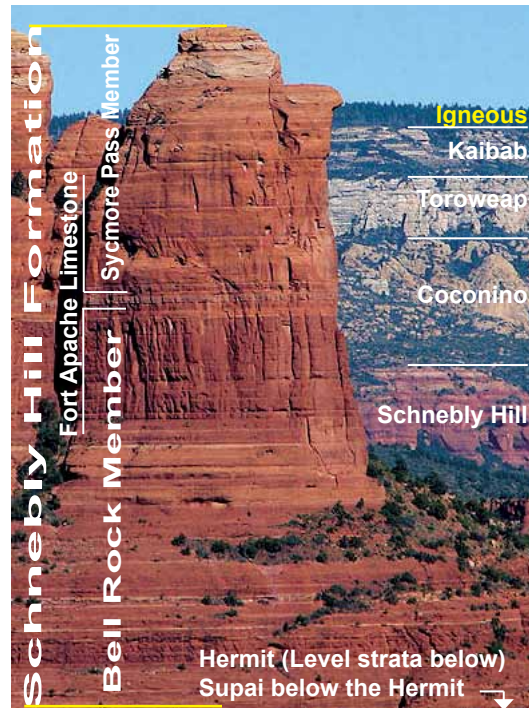
**7- Presence of Dolomite.** Dolomite is only known to form under water. In fact, there is no way to explain dolomite formation outside formation in water.

**8- Clasts.** A clast is a large rock. In the photo to the right is a large rock (about two feet wide) in the Coconino. Wind simply cannot move a rock that large. Only water can.



**9- Hermit Filled Cracks.** Published in a secular professional journal: The Coconino and Hermit were soft (not solid rock yet) **at the same time.**

**10- Parabolic Recumbent Folds.** The photo to the right shows one. This kind of soft sediment folding cannot happen to dry sand. It not only has to be wet, it has to be saturated, The process of evulsion will drive out water so the grains make contact in a matter of minutes. That would distort the strata lines when folded. Evulsion has not yet started at the bottom of the 20 foot tall fold.



There are more lines of evidence showing the Coconino Formation was deposited in water, but now we move on to the rest of the strata in Sedona. Before we start with the earthquake, let's take a quick look at folding types. Earthquakes can cause folding. Deposition can cause folding. And, there are several other geological processes that can cause folding. As I have discovered over 50 outcrops of folding in the Sedona area I have found (with two exceptions) only folds caused by earthquake and deposition. Let's have a quick review of folding during deposition (or placement of the sediment). You may recall the diagram at the above-right. The Type I and Type II

folds are formed during deposition of sediment via the following action: A layer of crossbedded rapidly. Before evulsion can occur, a second top of the first sediment flow as shown in the t

This type of folding is found in the Supai Group formation and in a few places in the Schnebly Hill. In Schnebly Hill it usually occurs in conjunction with



supporting the idea of rapid deposition of the s



The Supai Group

It appears that Sedona is located where Noah's Ark bent folds (PRF) we described in the Coconino 1/4 mile north of the Pipeline trail along the Gir... in the Toroweap Formation on the east side of C... above right). A paper written in the 1990s report... Canyon, but the author did not give details of th

Earthquake

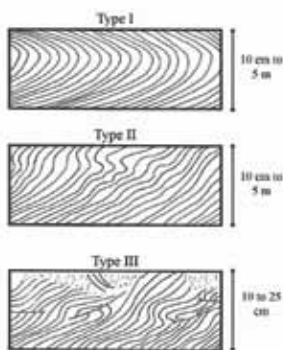
When an earthquake occurs, there is slipping of the earth is literally broken apart, but still together. There are several different vibration waves sent out. Another bounces off the core of the earth. Most... But, when those different waves come together... is a huge vibration. That is why buildings fall... damage 500 feet away. Damage often occurs fa

The points where the large vibrations occur... vibration waves work together (resonance) and... are usually secondary locations where resonance... resonance point. Those secondary locations are... the same altitude. The closer to the main resona... Smaller effects also occur above and below the

Here are THE most important facts for und

- 1 - If dry dirt is vibrated, it will act as if it is... the support will be very variable. This is no
- 2 - If hard rock is vibrated, it might fracture, fa... reoriented, but there will be no change to th
- 3 - If the material is wet or very wet, not rock... be deformed, but it will be crumbly along t

t. The folding occurs  
sediment is laid down  
diment flow drags the  
his diagram:



p, the Toroweap For-  
ill Formation. In the  
th earthquake folding  
be hard to tell which  
caused the folding.  
ely, it doesn't matter  
result is the same in  
trata in Sedona.



## Supai & Toroweap

s flood was rather active. The parabolic recur-  
no Formation are found over an area of 375 sq.  
PRFs in the Supai Group along Dry Creek about  
dner trail (photo above left). They are also found  
Oak Creek a little north of Cave Springs (photo  
ts PRFs in the Toroweap at East Pocket and Loy  
e locations. We have not yet found those folds.

## Quakes

age along an underground fault (a place where  
ill in contact). This sets up waves of vibration.  
t out. One goes along the surface of the ground.  
t places just feel the effect of one of the waves.  
t just right they add to each other and the result  
down in one place and there is relatively little  
ar from the actual earthquake point.

r are known as resonance points. Two or more  
to product one big vibration. Interestingly, there  
e occurs but it is not nearly as great as the main  
e usually located around the main resonance at  
ance, the larger they are, but still much smaller.  
e main point at the same location.

## Understanding the Great Sedona Earthquake.

thick water. It will still give some support, but  
ot applicable to the Sedona earthquake.

ult or crumble. The rock may be broken and even  
e strata lines. Again, not applicable to Sedona.

yet, but in place to become rock, the strata may  
e strata lines. As you will see in the photos to

follow, this is not applicable to features found in Sedona.

**4** - If the material is liquefied, the strata lines will become deformed, but the strata lines will remain sharp and smooth. THIS is what is found in Sedona!

**5** - Earthquakes do not repeat in exactly the same locations. One location in a fault moves one time and some other location moves the next time. Therefore, when a geologist finds a main resonance point and many related, secondary resonance points, s/he can be confident that the results of just ONE earthquake are being observed.

**Y**ou will recall from the last issue that “**liquefied**” means there is water between the grains of sediment, acting as a lubricant, allowing the grains to slide past each other, leaving an undisturbed strata line except that it may bend from the original straight line that happens at deposition. You will also recall that “**evulsion**” is the forcing out of the water as the grains of sediment are squeezed from the pressure of sediment above. In other words, the strata at the bottom of a pile of strata will have the water squeezed out in just minutes so that the strata is still very wet, but no longer liquefied. Once evulsion occurs, distorted strata will have crumbly strata lines.

## Spoiler Alert

**B**ased on the above, we can confidently say that if all of the strata disturbed by an earthquake are smooth (#4 above), then all were still liquefied when disturbed. Therefore, all of the affected strata was deposited within minutes to a few hours. In addition, if PRFs are found within the range of strata affected by one earthquake, we have compounded the probability that all the strata was deposited very rapidly and an earthquake occurred immediately after that deposition.

## The Great Sedona Earthquake

**T**he location of the main resonance of the Sedona earthquake is located in a ridge between Long and Boyton Canyons. The area of the main location is about .5 mile square (about .75 km square). Here are a couple of photos of that area:

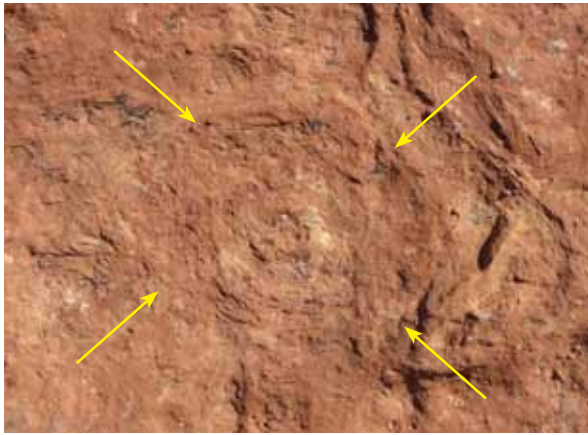


This is the primary area of resonance. Notice that the strata has been deformed into the rough shape of a sine wave! I find that amazing. It is hard to see all the distortion in the photo. The yellow lines show the top and bottom of the sediment “bed.” It is 20 to 30 feet tall. Location: East side of Boynton Canyon. It can be seen from the Boynton trail when the sun is right (late morning to early afternoon).



Very near the south end of the distortion, it can be plainly seen that the sine wave distortion also extends deep into the sediment bed below. This lower layer, along with the sine wave distorted layer were both fully liquefied when distorted. This can be seen close up along the “social trail” - US Forestry terminology - called the Mushroom Trail.

**M**any outcrops of earthquake disturbed soft sediment are present around Sedona, primarily in the Schnebly Hill Formation and primarily at the same altitude as



At the very southern edge of the main earthquake point are several "Water Pipes." The yellow arrows point to the outer edge of one of the six to eight inch diameter pipes. When an earthquake shakes very wet or liquefied sediment, it tends to separate the water from the sediment and squeeze the water out. The water follows the path of least resistance, usually moving vertically, leaving behind a cylinder shaped strata. The strata lines form circles and as the sediment-filled fluid flows upward.



Distorted strata at the north end of the main earthquake area.



Distorted strata on west side of Long Canyon



Distorted strata on east side of Long Canyon.

All these photos simply do not show how extensive (and beautiful) the distorted strata is in Boynton and Long Canyons in the primary earthquake zone.

the strata between these layers was also liquefied. In the process, we will also show that two more assumptions regarding Sedona geology (according to *Sedona Through Time*) are false.

**W**hat does the research, using the scientific method, support? God, in the person of Jesus, brought the judgment of Noah's Flood on His creation because of man's evil, with the resulting beauty of the rocks of Sedona, rocks that cry out about the glory of God! **CRM**



Loy Canyon



Wilson Mountain



Fay Canyon Overlook



Mescal Mountain

the main resonance point. We show a few of those on this page. This establishes, along with the Coconino Formation PRFs described in the last issue, that a HUGE area of strata around Sedona was liquefied at the same time. And that is true at two different altitudes, the lower Schnebly Hill Formation and the lower Coconino Formation. Next issue, we will look at the vertical effects of the Great Sedona Earthquake and see if

### QUOTE:

...Among the many top scientists who have endorsed the book is Nobel Prize-winner Brian Josephson, a physicist at Cambridge University, who says: "This book makes it clear that far from being an unscientific claim, intelligent design is valid science."

### POINT:

Granville Sewell is a professor of mathematics at the University of Texas El Paso. He mentions a quantum mechanics researcher who worked with quantum tunnelling. That researcher states, regarding Stephen Myers book, *Return of the God Hypothesis*, "This book makes it clear that far from being an unscientific claim, intelligent design is valid science." It is being recognized by secular scientists that materialism falls short of being able to explain origins of the universe or life. Materialist reject creation because they don't want there to be a God. But, there is.

Mathematician Granville Sewell in *The Federalist*, 9/2/2021

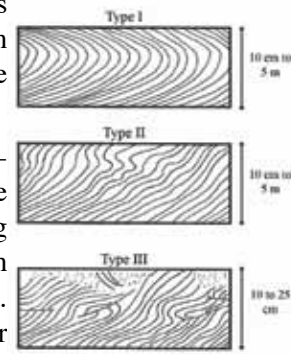
folded layers are formed during deposition of sediment. The folding occurs via the following action: A layer of crossbedded sediment is laid down rapidly. Before evulsion can occur, a second sediment flow drags the top of the first sediment flow as shown in the this diagram:

This type of folding is found in the Supai Group, the Toroweap Formation and in a few places in the Schnebly Hill Formation. In the Schnebly Hill it usually occurs in conjunction with earthquake folding



so it can be hard to tell which process caused the folding. Fortunately, it doesn't matter as the result is the same in

supporting the idea of rapid deposition of the strata in Sedona.



### The Supai Group & Toroweap

It appears that Sedona is located where Noah's flood was rather active. The parabolic recumbent folds (PRF) we described in the Coconino Formation are found over an area of 375 sq. kilometers. PRFs are very rare yet there are also PRFs in the Supai Group along Dry Creek about 1/4 mile north of the Pipeline trail along the Girdner trail (photo above left). They are also found in the Toroweap Formation on the east side of Oak Creek a little north of Cave Springs (photo above right). A paper written in the 1990s reports PRFs in the Toroweap at East Pocket and Loy Canyon, but the author did not give details of the locations. We have not yet found those folds.

### Earthquakes

When an earthquake occurs, there is slippage along an underground fault (a place where the earth is literally broken apart, but still in contact). This sets up waves of vibration. There are several different vibration waves sent out. One goes along the surface of the ground. Another bounces off the core of the earth. Most places just feel the effect of one of the waves. But, when those different waves come together just right they add to each other and the result is a huge vibration. That is why buildings fall down in one place and there is relatively little damage 500 feet away. Damage often occurs far from the actual earthquake point.

The points where the large vibrations occur are known as resonance points. Two or more vibration waves work together (resonance) to product one big vibration. Interestingly, there are usually secondary locations where resonance occurs but it is not nearly as great as the main resonance point. Those secondary locations are usually located around the main resonance at the same altitude. The closer to the main resonance, the larger they are, but still much smaller. Smaller effects also occur above and below the main point at the same location.

**Here are THE most important facts for understanding the Great Sedona Earthquake.**

- 1 - If dry dirt is vibrated, it will act as if it is thick water. It will still give some support, but the support will be very variable. This is not applicable to the Sedona earthquake.
- 2 - If hard rock is vibrated, it might fracture, fault or crumble. The rock may be broken and even reoriented, but there will be no change to the strata lines. Again, not applicable to Sedona.
- 3 - If the material is wet or very wet, not rock yet, but in place to become rock, the strata may be deformed, but it will be crumbly along the strata lines. As you will see in the photos to